

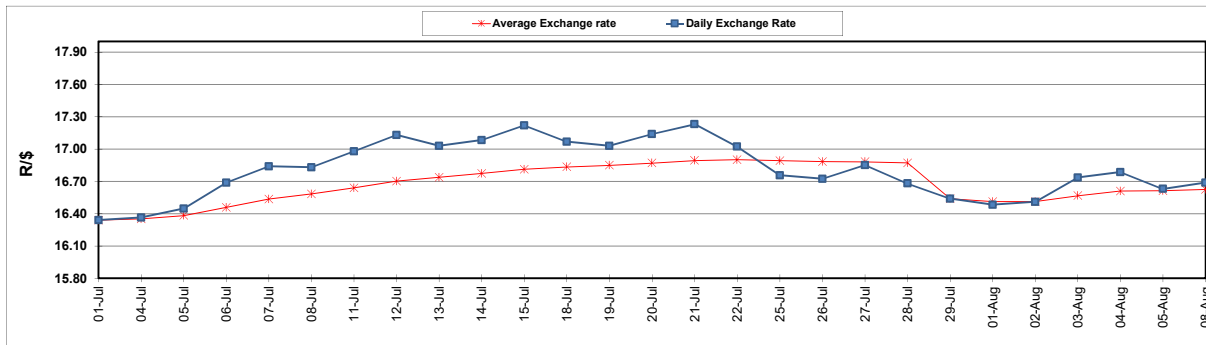
	PETROL 95 ULP	PETROL 93 ULP & LRP	DIESEL 0.05%	DIESEL 0.005%	ILL. PAR.
GAUTENG PUMP PRICE (SA c/l) AS FROM 03/08/2022	2,542.000	2,499.000	-	-	-
WHOLESALE PRICE (SA c/l) AS FROM 03/08/2022	-	-	2,452.440	2,461.840	1,842.288
SINGLE NATIONAL MAXIMUM RETAIL PRICE	-	-	-	-	2,431.000
BASIC FUEL PRICE - 08/08/2022 (SA c/l)	1,237.451	1,212.017	1,336.043	1,353.240	1,394.305
PRESS RELEASE CONTRIBUTION TO BFP 03/08/2022 - 08/08/2022 (SA c/l)	1,482.410	1,439.410	1,600.630	1,610.030	1,624.128
UNIT OVER/(UNDER) RECOVERY - 08/08/2022 (SA c/l)	244.959	227.393	264.587	256.790	229.823
AVERAGE BASIC FUEL PRICE 29/07/2022 - 08/08/2022	1,292.836	1,263.980	1,426.001	1,440.085	1,481.778
AVERAGE UNIT OVER/(UNDER) RECOVERY 29/07/2022 - 08/08/2022	278.289	264.144	244.487	241.088	204.064

ANALYSIS MOVEMENT OF AVERAGE OVER/(UNDER) RECOVERY

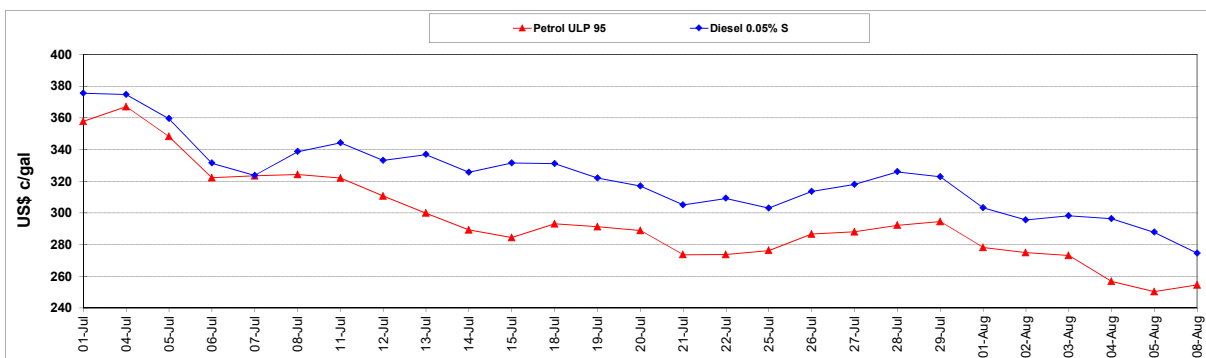
	PETROL 95	PETROL 93	DIESEL 0.05%	DIESEL 0.005%	ILL. PAR.
- MOVEMENT IN INTERNATIONAL PRODUCT PRICES	259.025	245.311	223.239	219.631	181.986
- MOVEMENT IN EXCHANGE RATE	19.263	18.833	21.247	21.457	22.078
AVERAGE UNIT OVER/(UNDER) RECOVERY 29/07/2022 - 08/08/2022	278.289	264.144	244.487	241.088	204.064

R/\$ EXCHANGE RATE - (R/\$16.6875 - 08/08/2022)

EXCHANGE RATE USED IN BASIC FUEL PRICE



INTERNATIONAL PRODUCT PRICES OF BASKET USED IN BASIC FUEL PRICE



BASIC FUEL PRICE IN SA CENTS PER LITRE

